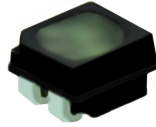


P5 Indoor 320x160mm Soft Flexible LED Module

Specification

Model No.: **P5-ISF16S-SMD2121-64x32-E**

LED Lamp Specification



Color	Package	Intensity	Viewing Angle	Wavelength	Testing Conditions
Red	SMD2121	80-104mcd	120°	618-623nm	25°C,15mA
Green		270-338mcd	120°	515-519nm	25°C,10mA
Blue		31-39mcd	120°	465-469nm	25°C,5mA

Module Photo





Module Parameter

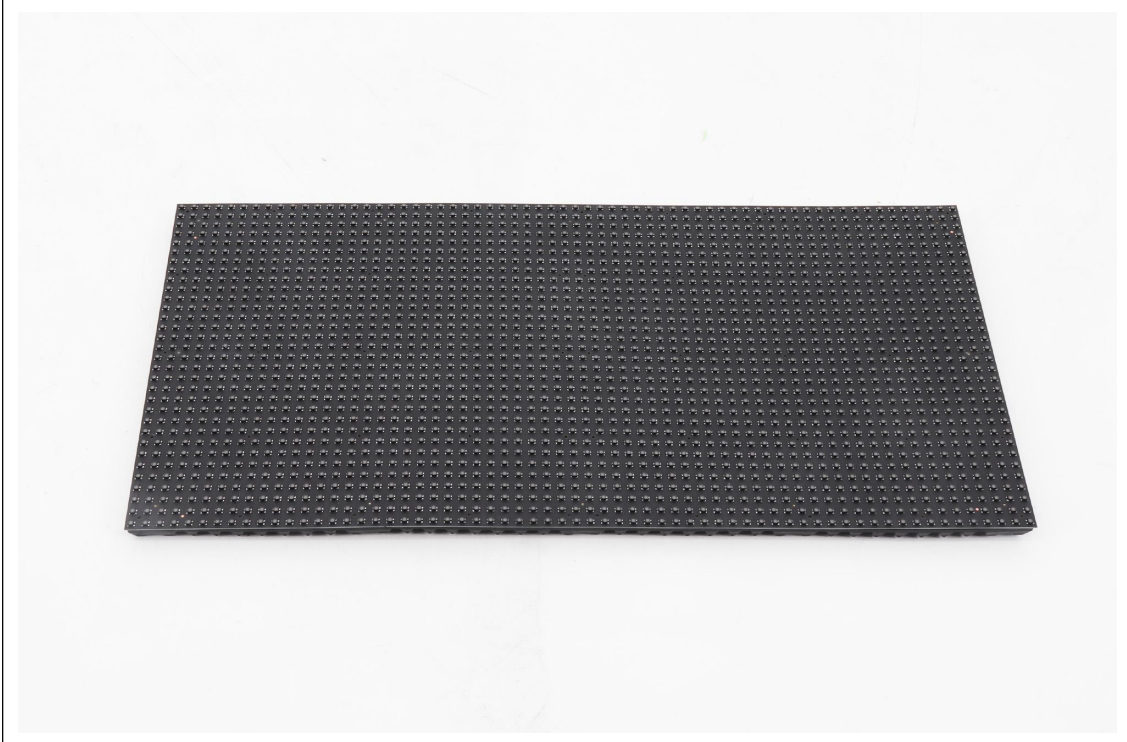
Pixel Pitch	5mm
Pixel Configuration	SMD2121
Density	40,000 pixels/m ²
Module Resolution	64pixel(L) * 32pixel(H)
Module Dimension	320mm(L) * 160mm(H) * 9mm(D)
Driving Mode	Constant current, 1/16 duty

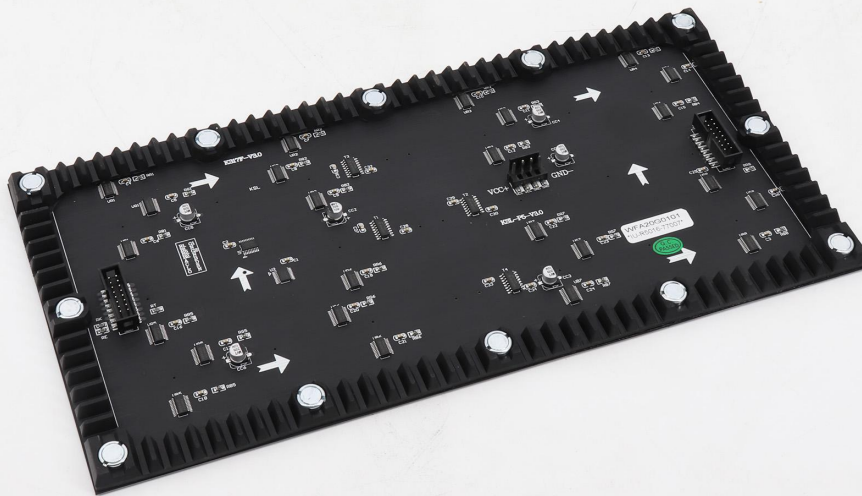
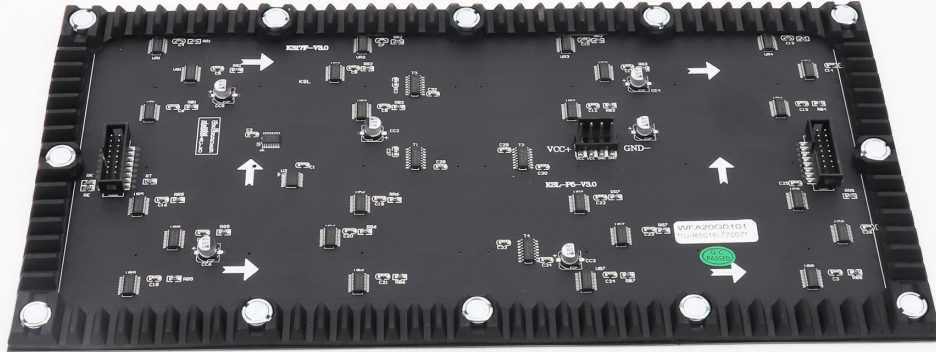
Electricity Parameter

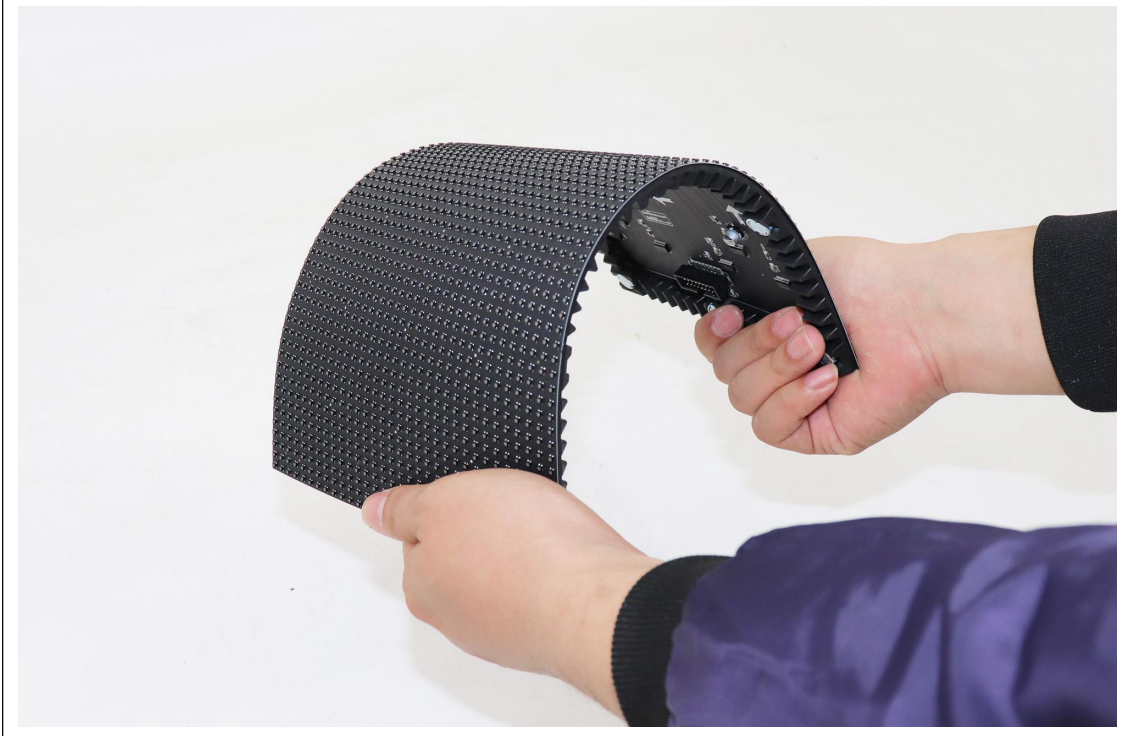
Optical Ratings	
Brightness	≥800 cd/m ²
Viewing Angle	120°(Horizontal); 120°(Vertical)
Best Viewing Distance	≥5m
Gray Grade	14 bits
Display Color	4.4 trillion colors
Brightness Adjustment	100 grades by software or automatically by sensor
Max. Power Consumption	15W

Control System	
Frame Frequency	≥60Hz
Refresh Frequency	≥1,920Hz
Input Signal	Composite Video, S-video, DVI, HDMI, SDI, HD-SDI
Control Distance	100M (Ethernet cable); 20KM (Optical fiber cable)
Support VGA Mode	800*600, 1024*768, 1280*1024, 1600*1200
Color Temperature	5000—9300 adjustable

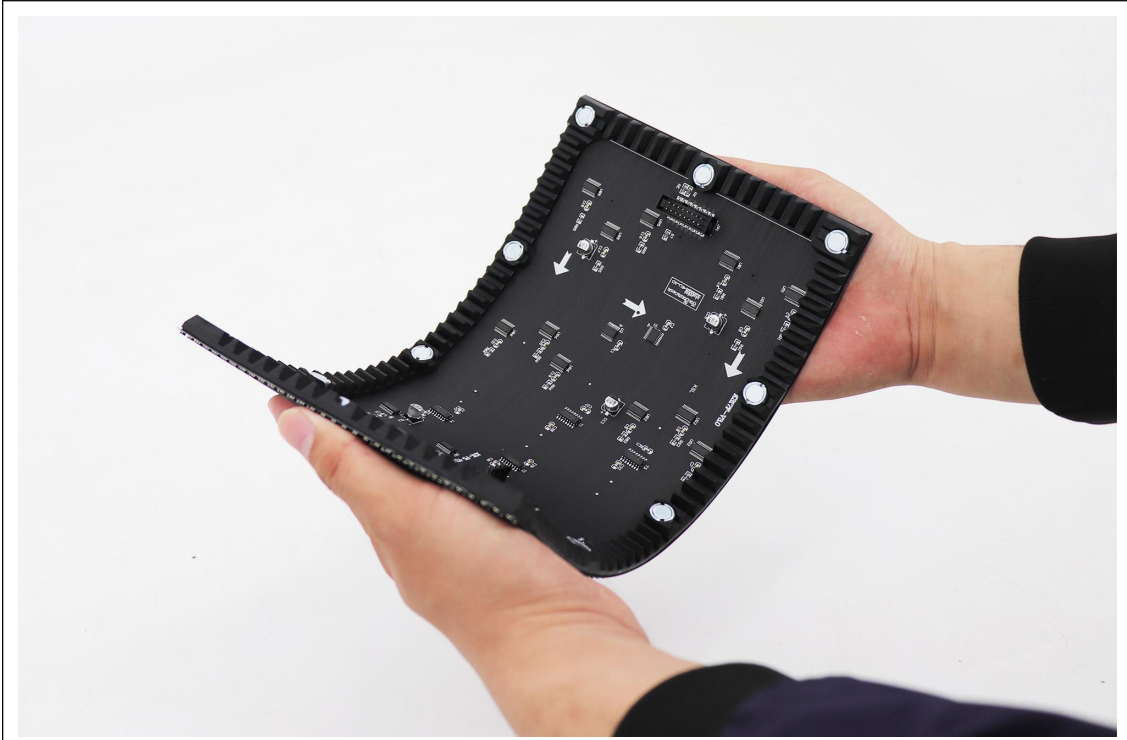
Brightness Correction	Pixel by pixel, module by module, cabinet by cabinet
Reliability	
Working Temperature	-20~+60 °C
Storage Temperature	-30~+70 °C
Working Humidity	10%~90% RH
Lifetime	100,000 hours
MTBF	5000 hours
Continuous Operating Time	≥72 hours
Protection Grade	IP31
Out-of-Control Pixel Rate	≤0.01%

Detail

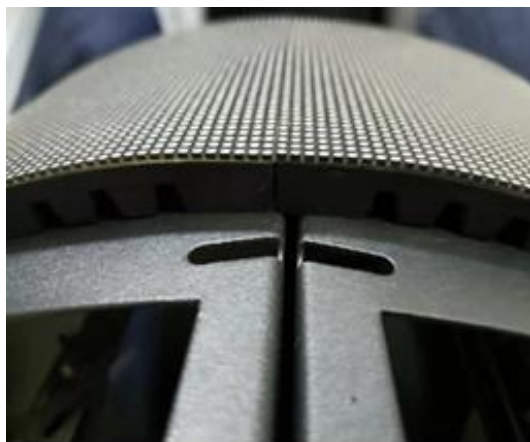
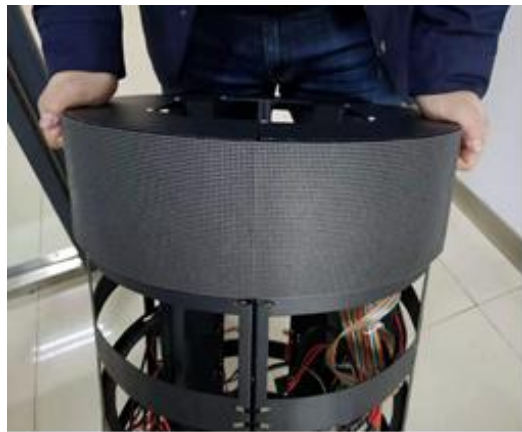




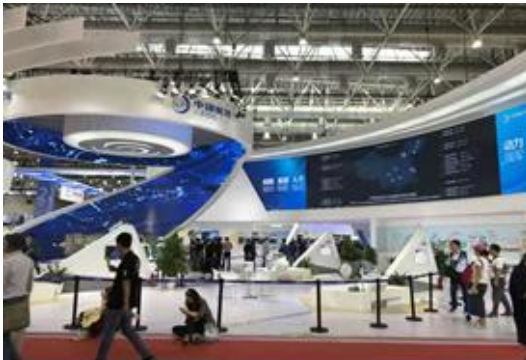




Assembly diagram



Application



Package



